

Indian Port Rail & Ropeway Corporation Ltd.

(JV under Ministry of Ports, Shipping & Waterways, Govt. of India)

CIN No: U60300DL2015PLC282703

(An ISO 9001, 14001 & 45001 Certified Company)

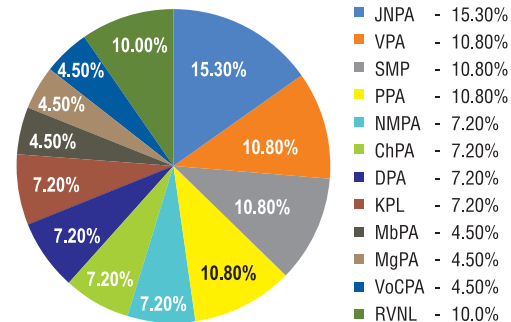


द्रुतमेव कुशलं संयोजनम्

Fast and Efficient Connectivity

IPRCL at a Glance

- JV company formed in 2015 with Cabinet Approval to support the Sagarmala Programme
- 90% equity of 11 Major Ports & 10% equity of RVNL
- Mandated for first & last mile connectivity and allied infrastructure



2015

- Incorporated under Company Act 2013
- 6 Projects allocated under Sagarmala NPP

2016

- Appointment of 1st Managing Director
- Projects executed through RITES or RVNL

2017

- Business for Non-major ports and private industries started

2018

- Project execution started in-house

2023

- Loco operation & maintenance work initiated

2022

- Waterways and Harbour Development projects started

2020

- Coal mine connectivity work started for CIL
- National Maritime Heritage Complex work assigned
- PRT consultancy for urban areas and Airport

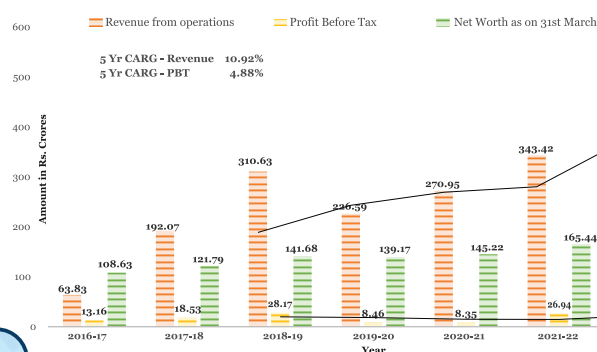
2019

- Ropeway business started
- Major DPRs for Heavy haul rail corridor (Rs. 4K Cr.) and Indore- Manmad railway line (Rs. 9K Cr)
- RoB business started under Setu-Bharatam
- Conveyor belt business started in VPA

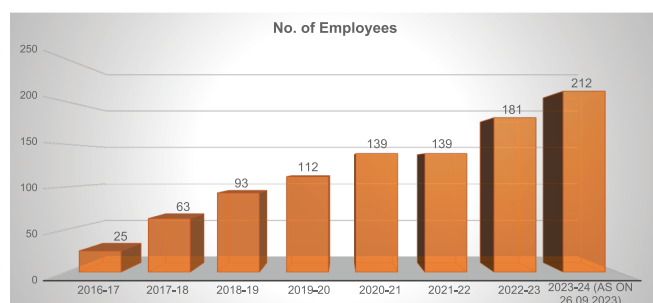
BOARD OF DIRECTORS

- Secretary, MoPSW – Chairman
- Managing Director
- Director (Works)
- Director (Transportation & BD)
- Director (Finance)
- JS(SM), MoPSW- Govt. Nominee Director
- Chairmen, 5 Major Ports – Nominee Promoter Directors
- ED, RVNL- Nominee Promoter Director
- Woman Director
- 2 Independent Directors

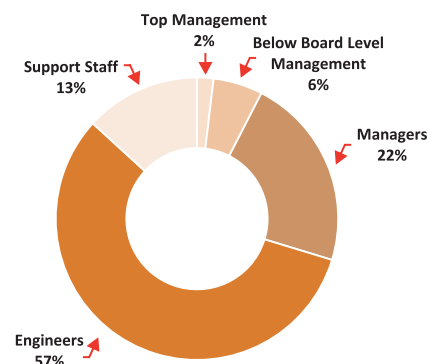
FINANCIAL PERFORMANCE FOR YEAR 2016-17 TO 2022-23

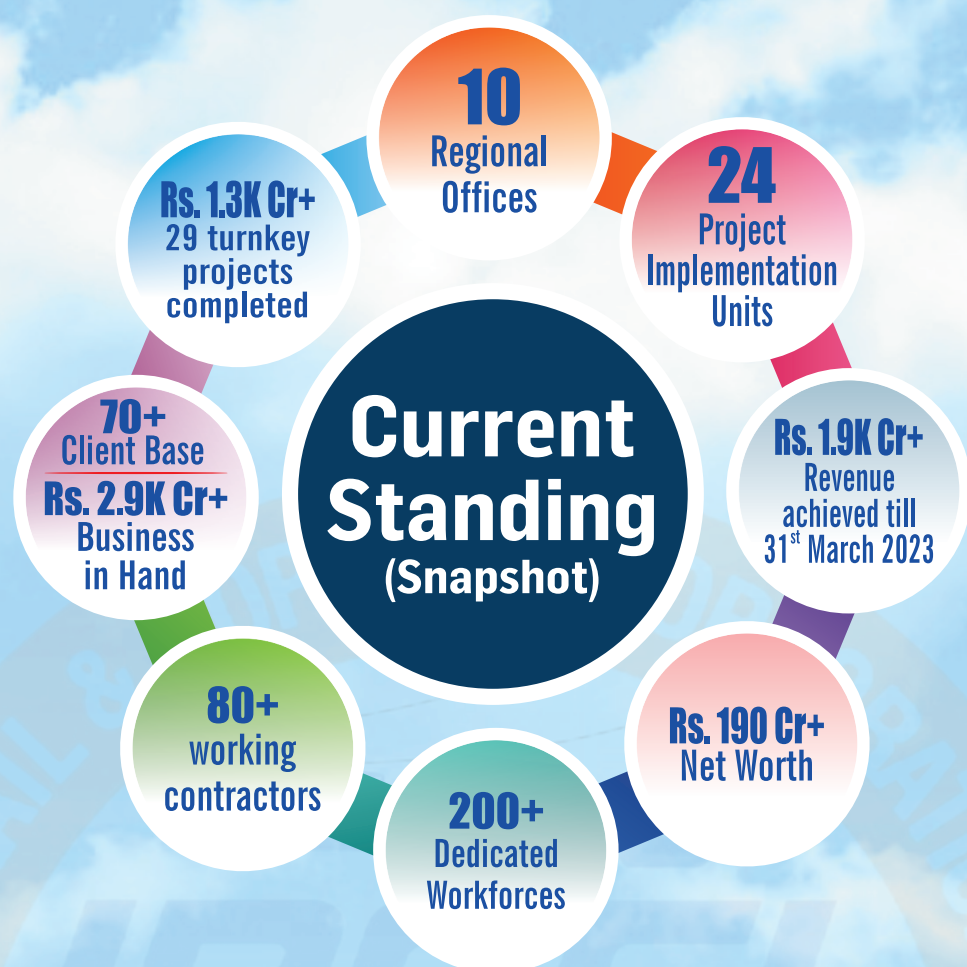


EMPLOYEES STRENGTH



OUR TEAM





REGISTRATION AND EMPANELMENT

Indian Railways and 14 Zonal Railways

Govt. undertaking like DFCCIL, NTPC, BPCL, HPCL, MAHAGENCO

Corporate entities like Tata Steel, DP World, Vedanta etc.

EXIM Bank

IMPORTANT CLIENTS

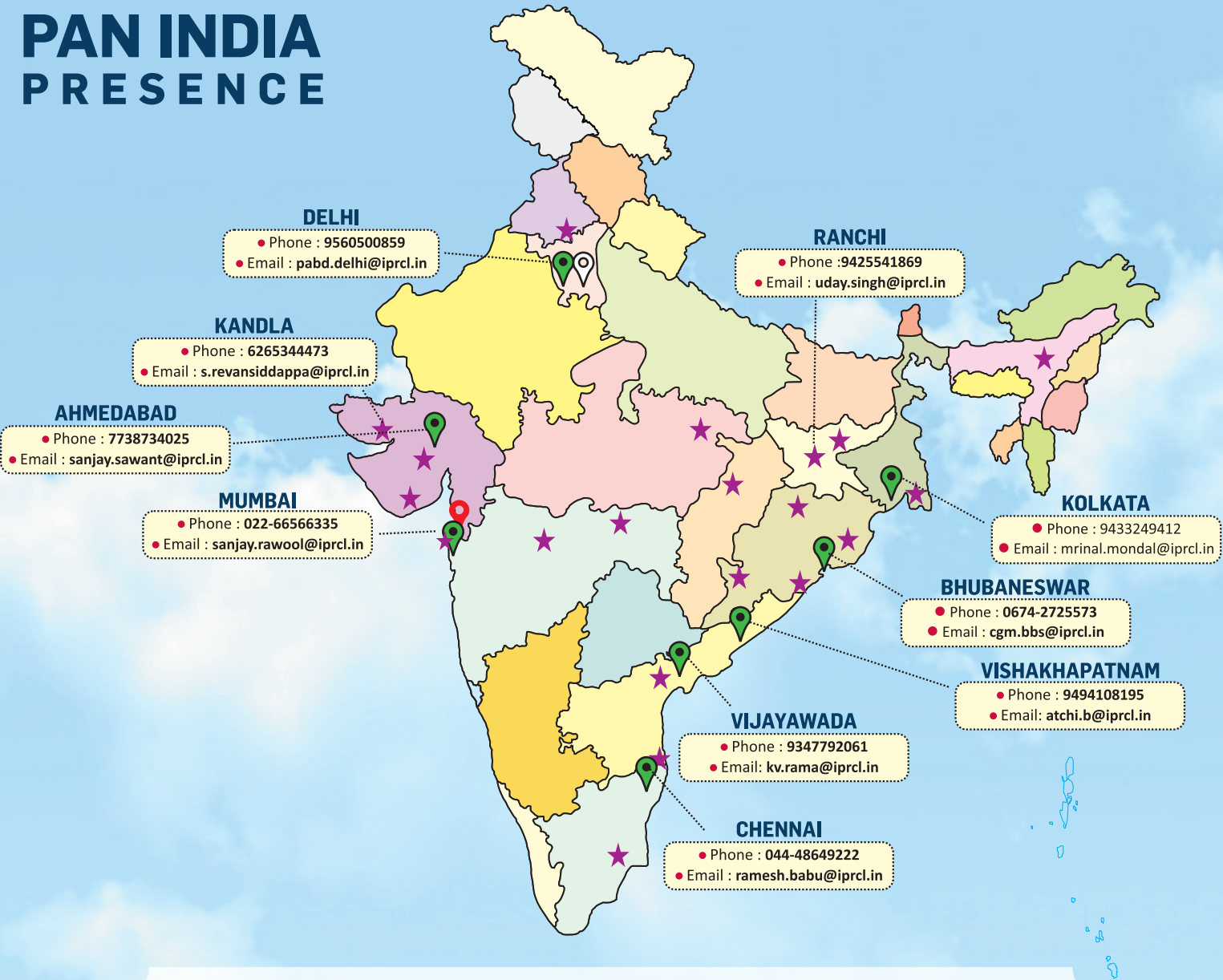
Major Ports

Non-Major Ports

Other Industries

Prospective Business

PAN INDIA PRESENCE



★ Project Site Offices

- Haldia
- Dhamra
- Paradip
- Lanjigarh
- Piparwar
- Lothal
- Bilaspur
- Bokaro
- Tuticorin
- Ennore
- JNPA
- Jalna
- Nagpur
- Kandla
- Pipavav
- Narnol
- Bogibeel
- Lajkura
- Singrauli



📍 **Corporate Office:** 4th Floor, Nirman Bhawan, Mumbai Port Trust Building, Mazgaon (E), M.P Road, Mumbai-400010,
Ph. No.: +91-22-6656 6335; Fax No.: +91-22-6656 6336, Email : iprcl.mumbai@gmail.com, website: www.iprcl.in
📍 **Registered Office:** 1st Floor, NBCC Place, Bhishma Pitamah Marg, Lodhi Road, New Delhi-110003


iprcl.Mumbai


Indian Port Rail & Ropeway
Corporation Ltd. (IPRCL)


@IPRCL_Mumbai


iprclmumbai


@iprclmumbai5296